

## Anti-H\_BDCA2 hIgG1 Antibody(Litifilimab)

### Product information

GM-31294AB-10	10 µg
GM-31294AB-100	100 µg
GM-31294AB-1000	1 mg

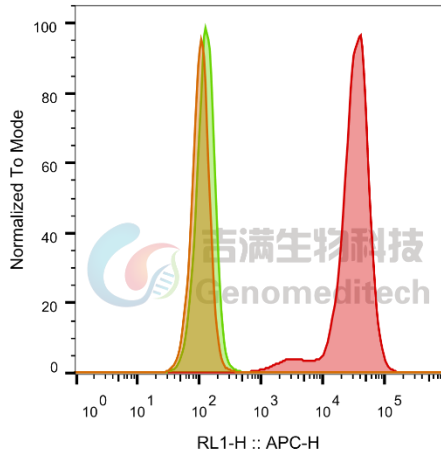
### Antibody Information

Species Reactivity	Human; Cynomolgus
Clone	Litifilimab
Source/Isotype	Monoclonal human IgG1, κ
Application	Flow cytometry; Activation assay
Specificity	Detects BDCA2
Gene	BDCA2
Other Names	BDCA-2, BDCA2, CD303, CLECSF11, CLECSF7, DLEC, HECL, PRO34150, CLEC4C
Gene ID	170482(human); A0A2K5UWP4(Cynomolgus)
Background	BDCA2 (Blood Dendritic Cell Antigen 2) is a cell surface antigen primarily expressed in a subset of dendritic cells. BDCA2 plays a crucial role in the immune system, particularly in regulating immune responses and antigen presentation processes. Research has shown that BDCA2 functions involve modulating the activity of dendritic cells and the activation status of T cells, thus impacting the expression of immune responses. Studying BDCA2 helps deepen our understanding of the functions and regulatory mechanisms of dendritic cells in the immune system, providing valuable insights for disease treatment and the development of immunotherapy.
Storage	Store at 2-8°C short term (1-2 weeks).Store at ≤ -20°C long term. Avoid repeated freeze-thaw.
Formulation	Phosphate-buffered solution, pH 7.2.
Endotoxin	< 1 EU/mg, determined by LAL gel clotting assay

## Data Examples

Flow cytometry

H\_BDCA2 HEK-293 Cell Line(Catalog # GM-C13222) was stained with Anti-H\_BDCA2 hlgG1 Antibody(Litifilimab) (Catalog # GM-31294AB) or isotype control antibody, followed by anti-Human IgG APC-conjugated Secondary Antibody.

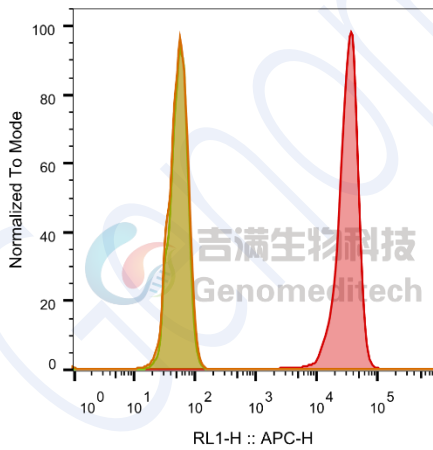


SampleID	Geometric Mean : RL1-H
HEK-293 anti-H_BDCA2+APC-2nd Ab	105
HEK-293 H_BDCA2 H_IgG+APC-2nd Ab	128
HEK-293 H_BDCA2 anti-H_BDCA2+APC-2nd Ab	28723

Fig. FACS

Flow cytometry

Cynomolgus\_BDCA2 CHO-K1 Cell Line (Catalog # GM-C13188) was stained with Anti-H\_BDCA2 hlgG1 Antibody(Litifilimab) (Catalog # GM-31294AB) or isotype control antibody, followed by anti-Human IgG APC-conjugated Secondary Antibody.

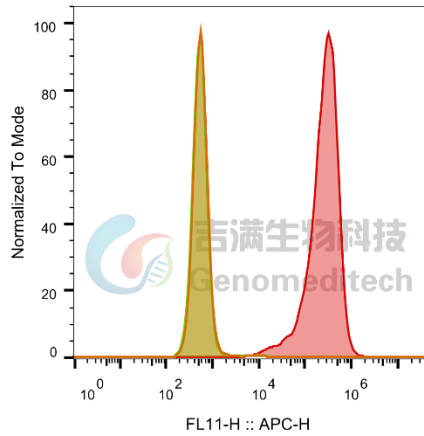


SampleID	Geometric Mean : RL1-H
CHO-K1 anti-H_BDCA2+APC-2nd Ab	53.2
CHO-K1 Cyno_BDCA2 H_IgG+APC_2nd Ab	55.3
CHO-K1 Cyno_BDCA2 anti-H_BDCA2+APC-2nd Ab	29803

Fig. FACS

Flow cytometry

H\_BDCA2 Reporter Jurkat Cell Line (Catalog #GM-C13225) was stained with Anti-H\_BDCA2 hlgG1 Antibody(Litifilimab) (Catalog # GM-31294AB) or isotype control antibody, followed by anti-Human IgG APC-conjugated Secondary Antibody.

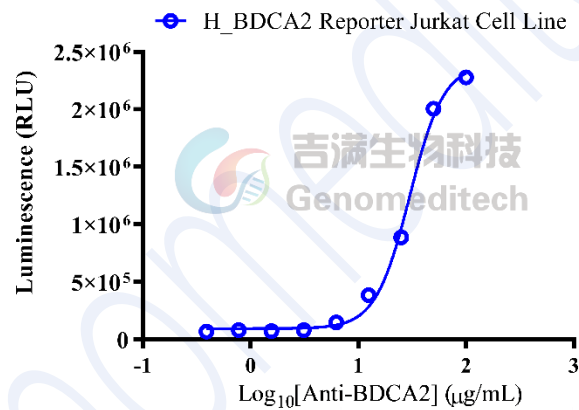


SampleID	Geometric Mean : FL11-H
Jurkat anti-H_BDCA2+APC-2nd Ab	580
H_BDCA2 Reporter Jurkat H_IgG+APC-2nd Ab	567
H_BDCA2 Reporter Jurkat anti-H_BDCA2+APC-2nd Ab	238513

Fig. FACS

Activation assay

Anti-H\_BDCA2 hIgG1 Antibody(Litifilimab) (Catalog # GM-31294AB) activates the H\_BDCA2 Reporter Jurkat Cell Line (Catalog #GM-C13225), leading to induced luminescence. The IC50 for this effect is 30.08 µg/mL.



H_BDCA2 Reporter Jurkat Cell Line	
EC50	30.08

Fig. assay